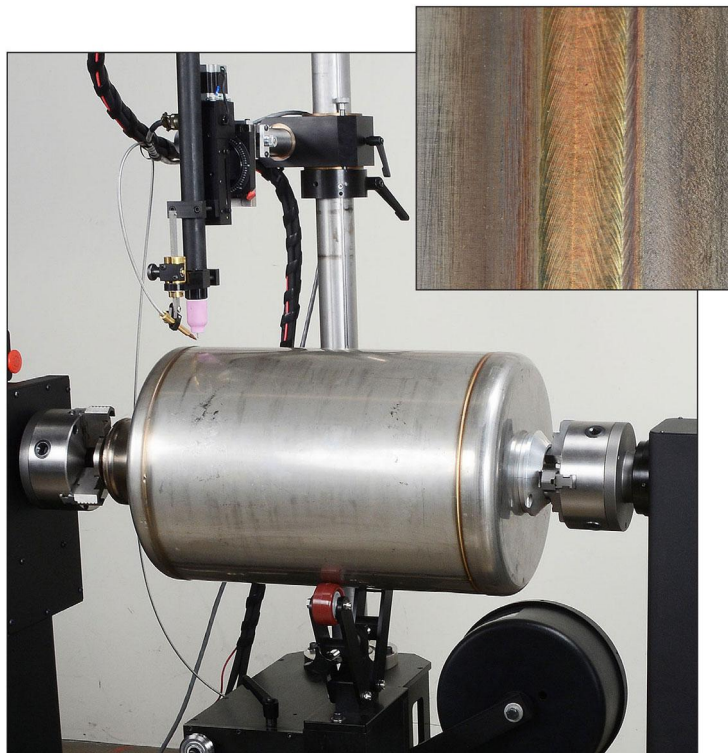
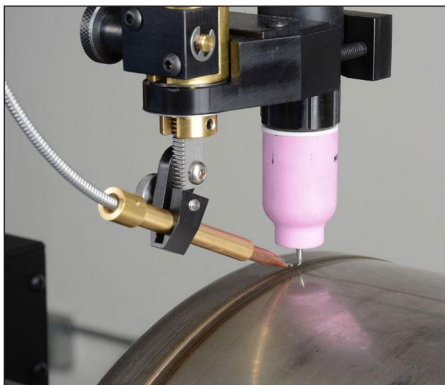


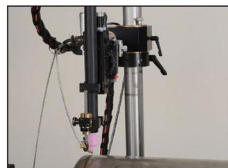
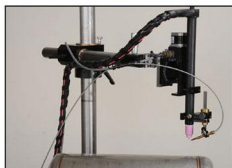
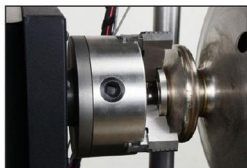


CWL - Circumferential Welding Lathe

Full function CWL 36 Series Precision Welding Positioners are designed specifically for automatic welding applications. To achieve maximum welding rate and quality with minimal labor cost. The CWL Circumferential Welding Lathe is a versatile production-ready product. Designed to solve your Circumferential & Linear TIG, PLASMA & MIG welding requirements. (Many options available - not shown)



CWL-36-XX accommodates 36" part diameter





CWL 36 CIRCUMFERENTIAL WELDING LATHE

FEATURES:

- Detachable Fixture Control Pendant
- Headstock: Direct Helical Gear Drive with Monolithic rigid all steel frame
- Bed: Rigid - all steel construction. Saddle & Tailstock ride on precision high capacity preloaded bearing system
- Tailstock: Rigid all steel construction with full range of alignment adjustment(s)
- Independent Tailstock Pusher System - maintains alignment over full range of thrust
- Torch Head swings to rear of tool for clear access when loading & unloading workpiece
- Detented and Locking Torch Tower Head Pivot for overhead loading

TYPICAL OPTIONS:

Headstock

- Rotary spindle ID gas purge
- Up to 3.00" (5.1 em) Spindle through hole
- Load capacity to 1 ,000 lbs (454 kg)

Tailstock

- Rotary gas purge
- Up to 3.00" (5.1 em) spindle through hole
- Thrust loads to 500 lbs (2,227 N)

Torch Tower

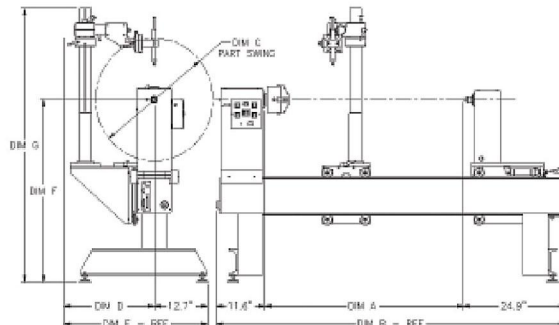
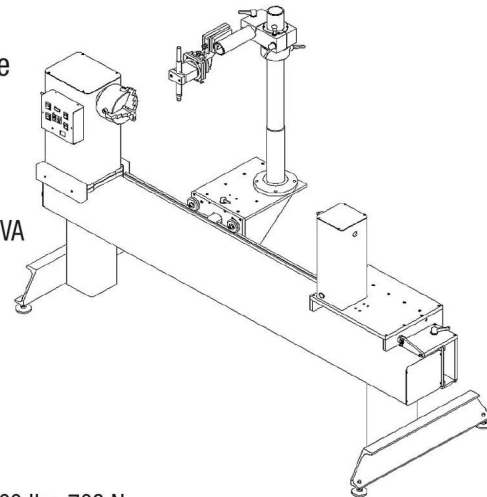
- Motorized z-axis
- Motorized torch mount rotary stage
- Dual Torches

SPECIFICATIONS:

- Input voltage: 100/125 200/250 VAC 50/60 Hz 100 VA
- Shop Air: 90 PSI - filtered
- Speed range .01" 30.00 RPM
- Speed accuracy: 0.10% of full scale
- T.I.R. .001"/ .025 mm
- Weld current capacity: up to 300 Amps
- Spindle through hole: 1.27 in 3.22 cm
- Tailstock stroke 3.00 in 76 mm/live center
- Maximum tailstock thrust force (90 PSI Shop air): 160 lbs. 708 N
- Workpiece weight capacity: 250 lbs. 113 kg

ADDITIONAL OPTIONS:

- Workpiece steady rest(s)
- Custom tooling to hold/locate workpiece
- Computer controlled turn-key systems
- Custom designed positioners
- Side beam carriage



BASIC MODEL NUMBER	DIM A		DIM B		DIM C		DIM D		DIM E		DIM F		DIM G	
	(in)	(cm)	(in)	(cm)	(in)	(cm)	(in)	(cm)	(in)	(cm)	(in)	(cm)	(in)	(cm)
CWL-30-48	48.0	121.9	84.5	214.6	30.0	76.2	21.5	54.6	34.2	86.9	41.6	105.7	62.5	158.8
CWL-30-72	72.0	182.9	108.5	275.6										
CWL-30-120	120.0	304.8	156.5	397.5										
CWL-30-144	144.0	365.8	180.5	458.5										
CWL-36-48	48.0	121.9	84.5	214.6	36.0	91.4	24.5	62.2	37.2	94.5	44.6	113.3	68.5	174.0
CWL-36-72	72.0	182.9	108.5	275.6										
CWL-36-120	120.0	304.8	156.5	397.5										
CWL-36-144	144.0	365.8	180.5	458.5										

Available in any length

Weldlogic USA Engineering & Mfg.

2651 Lavery Court, Newbury Park
CA 91320, USA

Tel. (805) 498-4004 | Fax. (805) 498-1761

Weldlogic Europe

Blackstone Road, Huntingdon
Cambridgeshire, PE29 6EF, UK

Tel. 01480 437478 | Fax. 01480 437479