



WELDLOGIC
FORMING & WELDING SOLUTIONS

WELDING SOLUTIONS
FOR ADVANCED
MANUFACTURING

Plasma | TIG | Laser | MIG | Sub-Arc



■ **Engineering Challenge**

CHALLENGE ▼

Design and Build an automated welding system to enable automatic leak tight seal welded between a .0025" thick S.S. burst diaphragm to a heavy wall S.S. assembly.

The system has to precisely hold and position the assembly to enable the laser to penetrate both materials with high speed and high degree of repeatability.

SOLUTION ▼

Weldlogic engineers designed tooling and auto feeder to precisely place the delicate .0025" thick S.S. burst diaphragm on the thicker base assembly in a manner to axially clamp the two loose assemblies and create a high speed precision laser weld.

This system enables any assembler to simply place the two parts onto a carrier that brings the parts into the laser cell for processing and back out.

WELDLOGIC USA

2651 Lavery Court
Newbury Park, CA 91320
Tel. 805.498.4004 | Fax. 805.498.1761

WELDLOGIC EUROPE

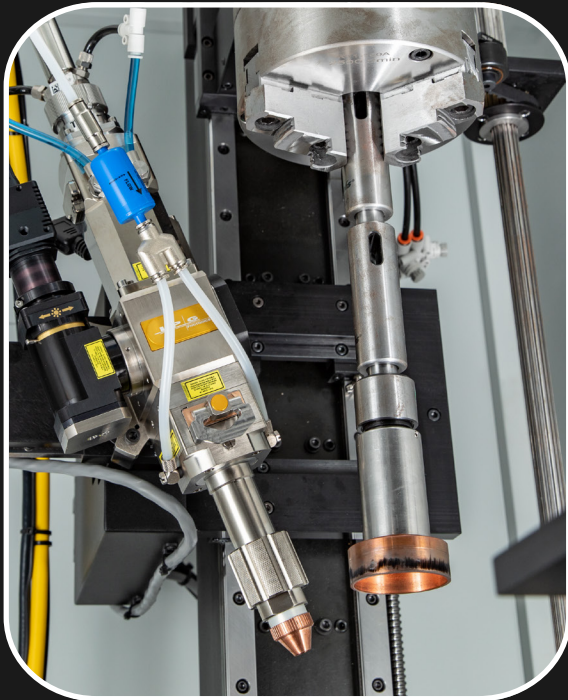
Blackstone Road, Huntingdon
Cambridgeshire, PE29 6EF, UK
Tel. 01480 437478 | Fax. 01480 437479

WELDLOGIC.COM



WELDLOGIC
FORMING & WELDING SOLUTIONS

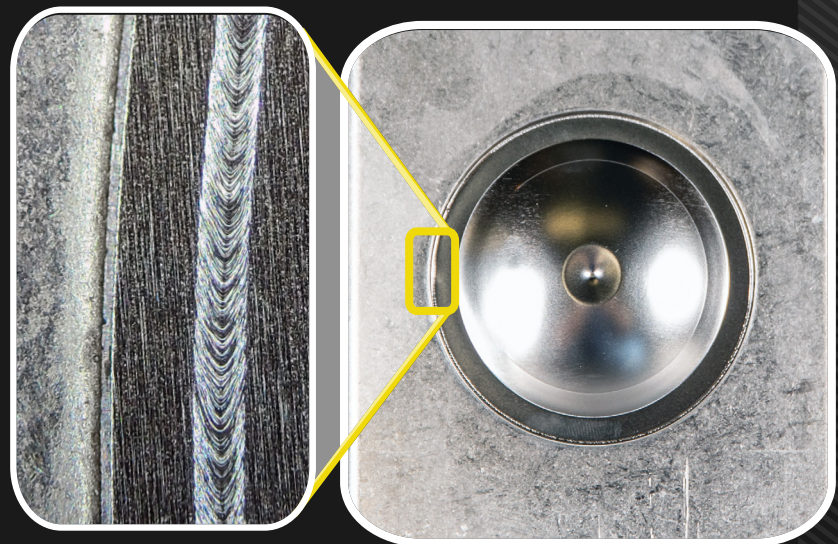
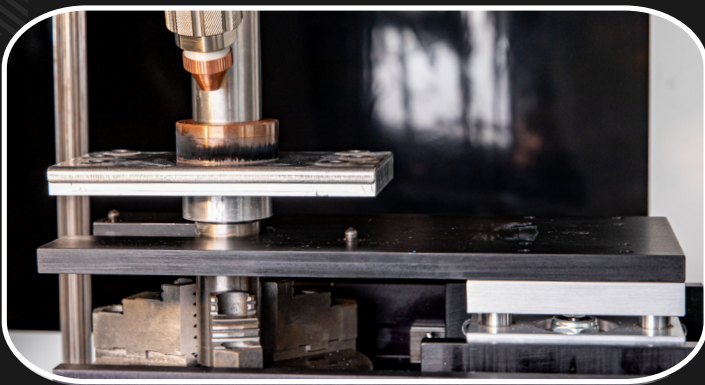
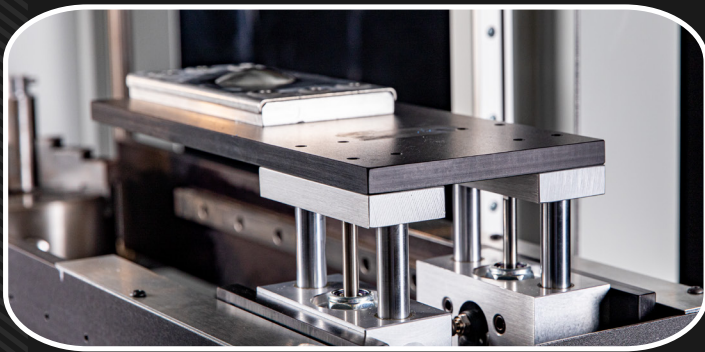
WELDING SOLUTIONS
FOR ADVANCED
MANUFACTURING



■ MACHINERY:

- ▶ Weldlogic AWS-Laser Controller
- ▶ Weldlogic Vertical Lathe / Dual Spindle Driven
- ▶ Auto Part Feeder
- ▶ 1000 watt fiber laser, and camera
- ▶ Work Station table with Class #1 safety enclosure
- ▶ Exhaust / Filtration
- ▶ Tooling, Process Development & Training

Contact Weldlogic Tech-Sales
to find a practical solution to your
welding requirements today!



WELDLOGIC USA

2651 Lavery Court
Newbury Park, CA 91320
Tel. 805.498.4004 | Fax. 805.498.1761

WELDLOGIC EUROPE

Blackstone Road, Huntingdon
Cambridgeshire, PE29 6EF, UK
Tel. 01480 437478 | Fax. 01480 437479